



AIA
New Jersey

THE AMERICAN INSTITUTE OF
ARCHITECTS NEW JERSEY CHAPTER
IS CELEBRATING NATIONAL
ARCHITECTURE WEEK 2018,
ENCOURAGING EQUITY, DIVERSITY AND
INCLUSION IN THE PROFESSION!

JOHN D. LYON, AIA

PROJECT ARCHITECT





AIA
New Jersey

What is an Architect ?

An architect is a qualified professional who designs and supervises the construction of buildings or other structures.

Who can be an Architect ?



TOUCH THE SKY- HIGH RISE STRUCTURES

IMHOTEP WAS ONE OF THE CHIEF OFFICIALS OF THE PHARAOH HE HAS BEEN ASCRIBED DESIGNER OF THE PYRAMID OF DJOSER, A STEP PYRAMID AT SAQQARA IN EGYPT IN 2630–2611 BC



SKYSCRAPERS ARE A CONTINUOUSLY
HABITABLE HIGH-RISE BUILDING THAT HAS OVER 40
FLOORS AND IS TALLER THAN APPROXIMATELY (492 FT).
HISTORICALLY, THE TERM FIRST REFERRED TO BUILDINGS
WITH 10 TO 20 FLOORS IN 1880S.





AIA
New Jersey

Everyone can be an Architect!



AIA NJ IS CELEBRATING NATIONAL ARCHITECTURE WEEK 2018! WWW.AIA-NJ.ORG



Dame Zaha Mohammad Hadid DBE RA was an Iraqi-British architect. She was the first woman to receive the Pritzker Architecture Prize, in 2004. She received the UK's most prestigious architectural award, the Stirling Prize, in 2010 and 2011. [Wikipedia](#)



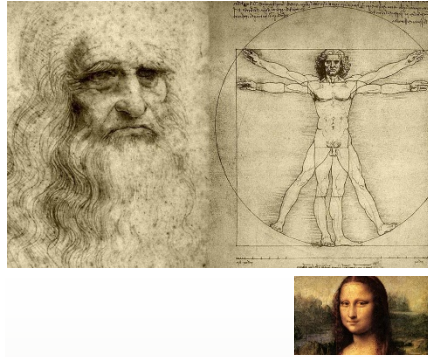
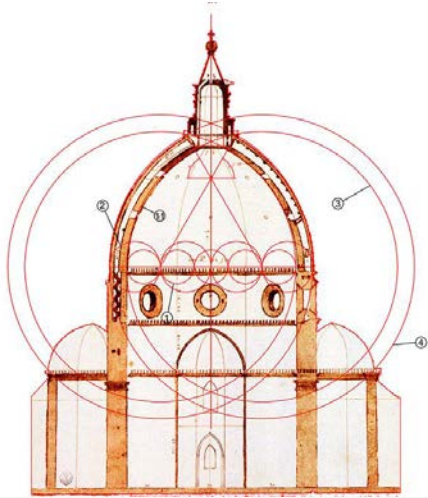


AIA
New Jersey

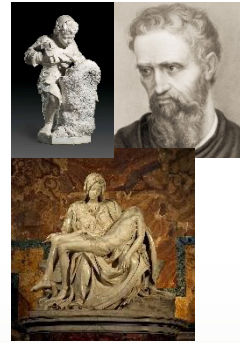
What does an Architect do?

- **Solves Problems**
- **Helps People**
- **Draws Pictures**
- **Uses a Computer**
- **Talks to lots of People**
- **Reads and Writes Documents and Letters**
- **Goes to Meetings**
- **Measures Buildings**
- **Makes Presentations**
- **Builds Models**
- **Designs Buildings**
- **Manipulates the Built Environment**
- **Creates Communities**

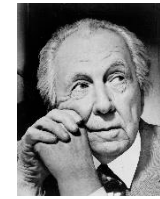
EXAMPLES OF ART & SCIENCE OF ARCHITECTURE- MATHEMATICS SUPPORT DESIGN



Leonardo da Vinci, 1452-1519 was an Italian Renaissance polymath whose areas of interest included invention, painting, sculpting, architecture, ... [Wikipedia](#)



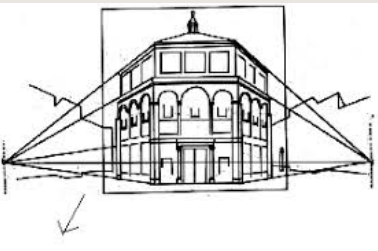
Michelangelo (6 March 1475 – 18 February 1564) was an [Italian](#) sculptor, painter, architect and poet of the [High Renaissance](#) born in the [Republic of Florence](#)



Frank Lloyd Wright was an American architect, interior designer, writer and educator, who designed more than 1,000 structures, 532 of which were completed. [Wikipedia](#)



Filippo Brunelleschi, 1377-1446 was an Italian designer and a key figure in architecture, recognized to be the first modern engineer, planner and sole construction supervisor. He was one of the founding fathers of the Renaissance





SIR DAVID FRANK ADJAYE OBE RA IS A GHANAIAN BRITISH ARCHITECT. ADJAYE IS THE LEAD DESIGNER OF THE NATIONAL MUSEUM OF AFRICAN AMERICAN HISTORY AND CULTURE, LOCATED ON THE NATIONAL MALL IN WASHINGTON, DC. [WIKIPEDIA](#)





AIA
New Jersey

How do you become an Architect ?

Usually, a student will

- **Complete High School**
- **Earn a 5-year Bachelor of Architecture Degree**
- **Get practical Work Experience**
- **Pass a Registration Exam**
- **Practice Architecture**

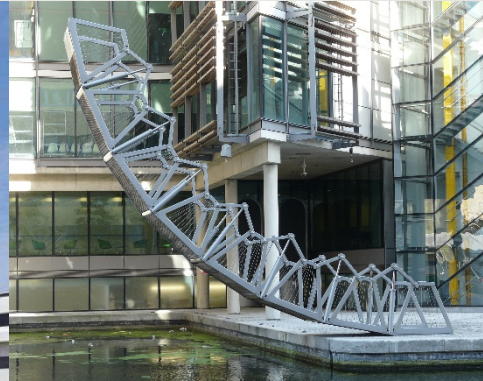
...but there are a variety of paths to take, allowing for different people from varied backgrounds with unique experience to become licensed.

Each year, new opportunities are opening up for more people to become Architects!



THOMAS HEATHERWICK

Thomas Alexander Heatherwick, CBE, RDI, HonFREng is an English designer and the founder of London-based design practice Heatherwick Studio





AIA

New Jersey

Architectural Projects Have 5 Phases

- Schematic Design
- Design Development
- Construction Documents
- Bidding
- Construction Administration

TINKER

REALIZED THAT HIS ARCHITECTURAL SKILLS COULD BE APPLIED TO SHOES

TINKER HAVEN HATFIELD, JR., IS AN AMERICAN DESIGNER OF NUMEROUS **NIKE** ATHLETIC SHOE MODELS, INCLUDING THE **AIR JORDAN** 3 THROUGH AIR JORDAN 15





AIA
New Jersey

What kinds of structures does an Architect Design?

All Building Types

Commercial Buildings,
Residential Buildings,
Public Buildings,
Institutional Buildings,
Corporate, Manufacturing and
Recreational facilities
...Even Tree Houses!

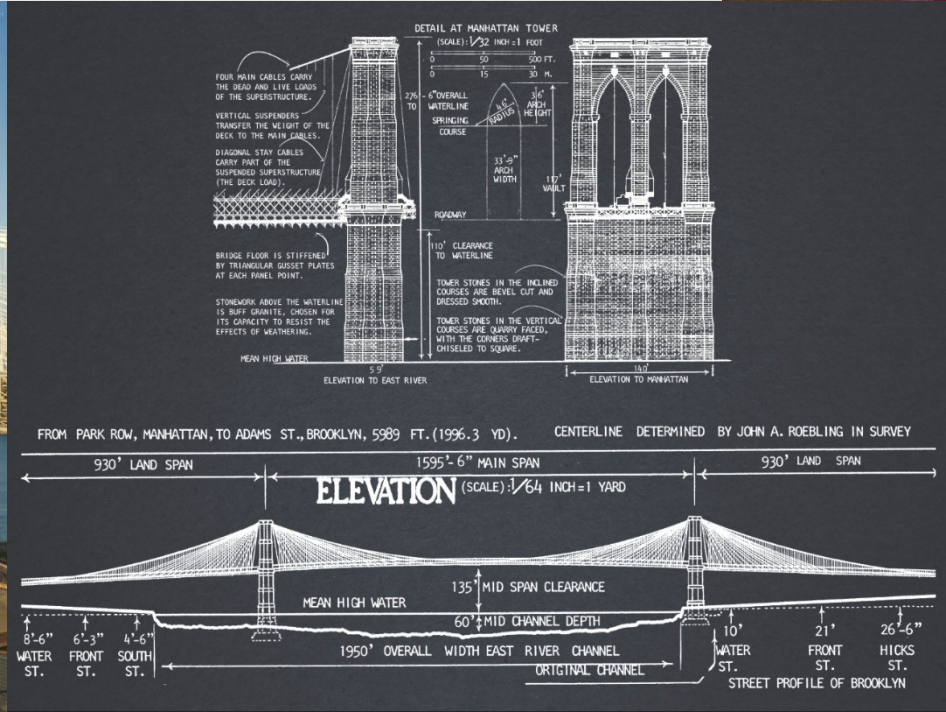
And when you put them all together, you have a community!
Architects help to design **LIVABLE COMMUNITIES !**



BROOKLYN BRIDGE -

TRENTON MAKES THE WORLD TAKES

THE BROOKLYN BRIDGE IS A HYBRID CABLE-STAYED/SUSPENSION BRIDGE IN NEW YORK CITY AND IS ONE OF THE OLDEST ROADWAY BRIDGES IN THE UNITED STATES-1883





AIA
New Jersey

What are the three Types of Communities?

Urban

The City

Suburban

The Outskirts of a City

Rural

The Country



AIA
New Jersey

What kinds of Buildings and Spaces do you find in a COMMUNITY ?

- Stores & Shopping Malls
- Houses & Apartments
- Libraries & Post Office
- Schools & Universities
- Restaurants
- Police & Fire Stations
- Office Buildings
- Houses of Worship
- Parks & Playgrounds
- Ball Fields
- Factories & Warehouses
- Transportation Facilities
- Parking Structures
- Theaters & Museums
- Community Centers
- Burial Grounds
- Hospitals
- Undeveloped Land
- Roadways
- Gas Stations

***Be it a house, school or office, where ever you live work or play,
EVERY BUILDING HAS AN ARCHITECT!***

AIA NJ IS CELEBRATING NATIONAL ARCHITECTURE WEEK 2018! WWW.AIA-NJ.ORG

Joyce Kilmer Elementary School



 **FVHD** architects
planners
Fraytak Veisz Hopkins Duthie, P.C.
celebrating 100 years | est 1918

TRANSPORTATION FACILITIES

THE MODERN TRAIN STATIONS OF TODAY ARE MUCH MORE THAN PLATFORMS, TRACK AND SOMEWHERE TO BUY A TICKET.



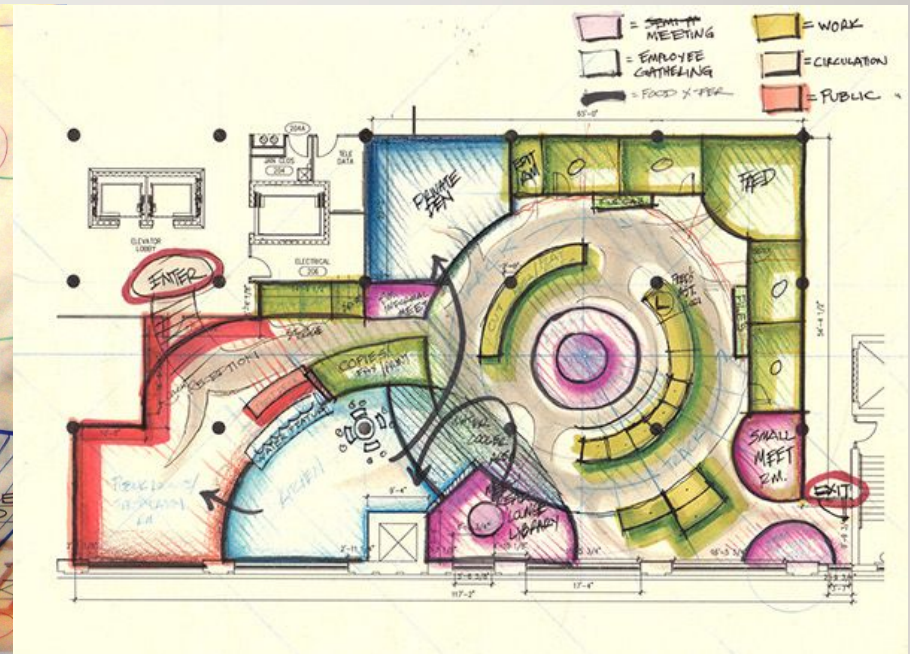
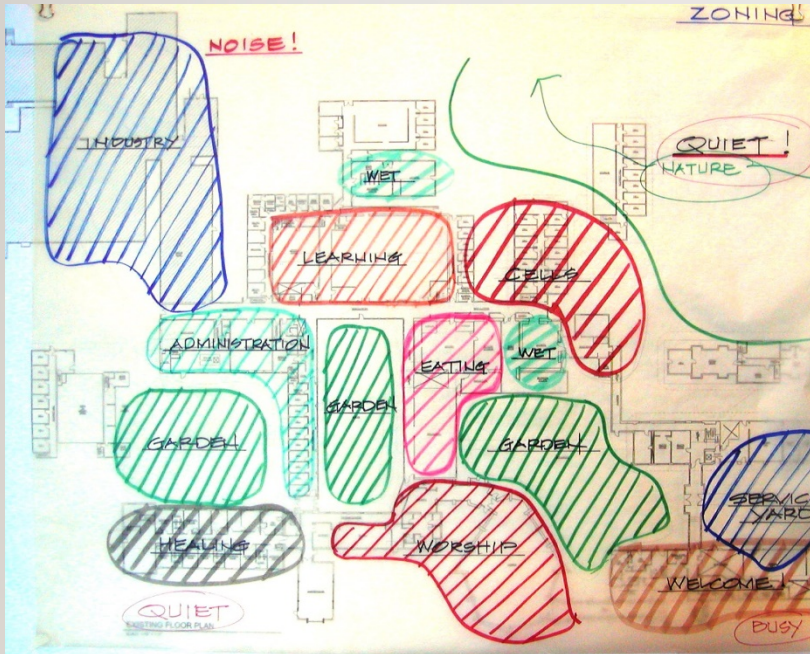


What or Who controls where those kinds of Buildings are Located?

- **Zoning Ordinance** - Regulations and laws that define how land in specific parts of town can be used. May also regulate lot size, placement, bulk (or density) and the height of structures.
- **Planning and Development Board** – develops a Community Plan and approves deviations from it. Advises the Municipal Council on Planning Matters.
- **Construction Officials** control the Individual Buildings

ZONING

ZONING IS THE PROCESS OF DIVIDING LAND IN A MUNICIPALITY INTO ZONES IN WHICH CERTAIN LAND USES ARE PERMITTED OR PROHIBITED. THE TYPE OF ZONE DETERMINES WHETHER PLANNING PERMISSION FOR A GIVEN DEVELOPMENT IS GRANTED. [WIKIPEDIA](https://en.wikipedia.org/wiki/Zoning)





AIA
New Jersey

A Well Planned Community Looks Like This...Radburn, New Jersey



AIA NJ IS CELEBRATING NATIONAL ARCHITECTURE WEEK 2018! WWW.AIA-NJ.ORG



AIA

New Jersey

The American Institute of Architects' Ten Principles for LIVABLE COMMUNITIES



AIA
New Jersey

1. Design on a Human Scale



Compact, pedestrian-friendly communities allow residents to walk to shops, services, cultural resources, and jobs and can reduce traffic congestion and benefit people's health.

AIA NJ IS CELEBRATING NATIONAL ARCHITECTURE WEEK 2018! WWW.AIA-NJ.ORG



AIA
New Jersey

2. Provide Choices



People want variety in housing, shopping, recreation, transportation, and employment. Variety creates lively neighborhoods and accommodates residents in different stages of their lives.

AIA NJ IS CELEBRATING NATIONAL ARCHITECTURE WEEK 2018! WWW.AIA-NJ.ORG



AIA
New Jersey

3. Encourage Mixed-Use



Integrating different land uses and varied building types creates vibrant, pedestrian friendly and diverse communities.



AIA
New Jersey

4. Preserve Urban Centers



Restoring, revitalizing, and infilling urban centers takes advantage of existing streets, services and buildings and avoids the need for new infrastructure. This helps to curb sprawl and promote stability for neighborhoods.

AIA NJ IS CELEBRATING NATIONAL ARCHITECTURE WEEK 2018! WWW.AIA-NJ.ORG



AIA
New Jersey

5. Vary Transportation Options



Giving people the option of walking, biking and using public transit, in addition to driving, reduces traffic congestion, protects the environment and encourages physical activity.



AIA
New Jersey

6. Build Vibrant Public Spaces



Citizens need welcoming, well-defined public places to stimulate face-to-face interaction, collectively celebrate and mourn, encourage civic participation, admire public art, and gather for public events.



AIA
New Jersey

7. Create a Neighborhood Identity



A “sense of place” gives neighborhoods a unique character, enhances the walking environment, and creates pride in the community.



AIA
New Jersey

8. Protect Environmental Resources



A well-designed balance of nature and development preserves natural systems, protects waterways from pollution, reduces air pollution, and protects property values.

AIA NJ IS CELEBRATING NATIONAL ARCHITECTURE WEEK 2018! WWW.AIA-NJ.ORG



AIA
New Jersey

9. Conserve Landscapes



Open space, farms, and wildlife habitat are essential for environmental, recreational, and cultural reasons.



AIA
New Jersey

10. Design Matters



Design excellence is the foundation of
successful and healthy communities.



AIA

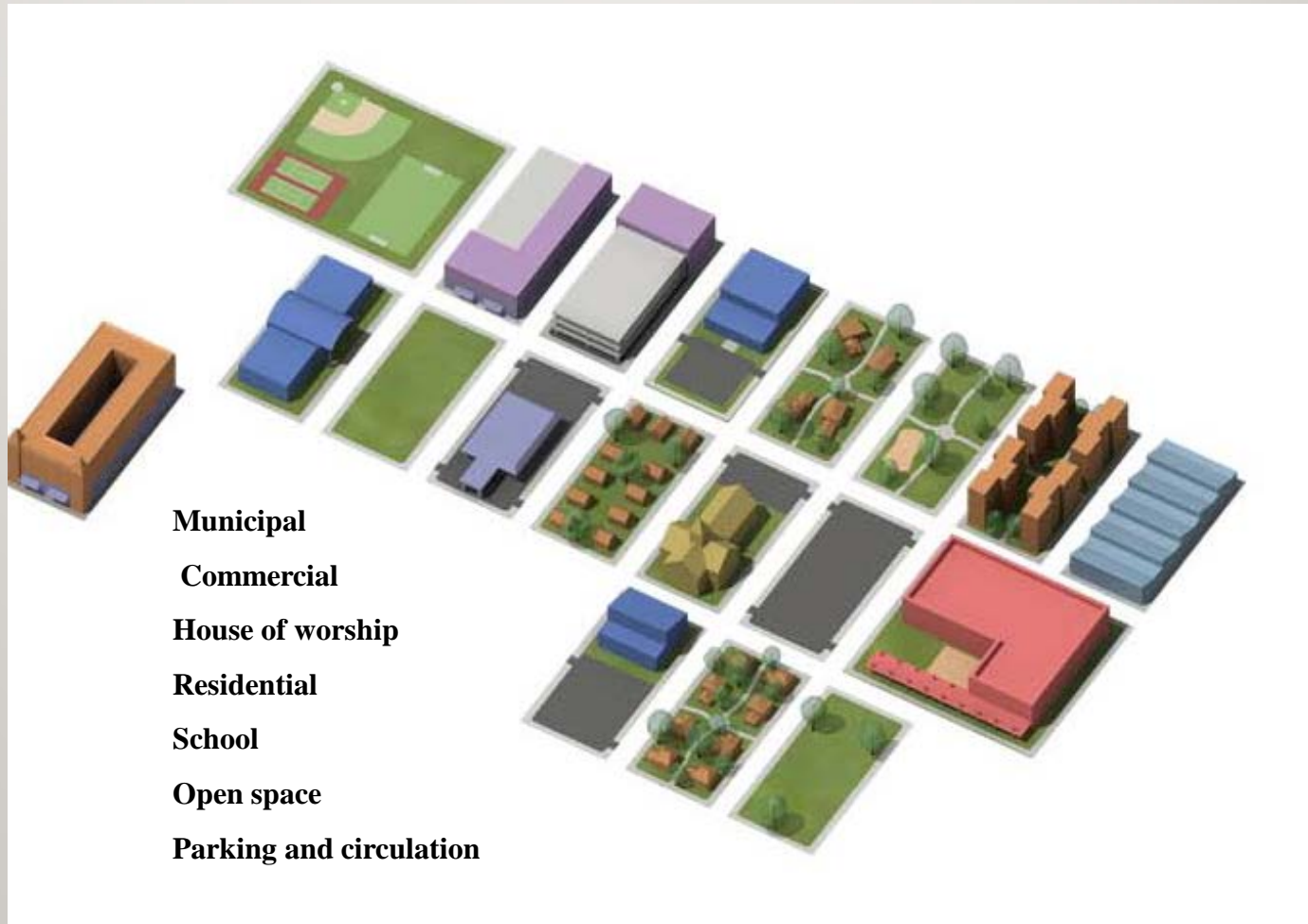
New Jersey

Try to Design A Livable Community!



AIA
New Jersey

Kit-of-Parts in a COMMUNITY





Did we succeed in designing a Livable Community?

- Have we **Preserved Urban Centers**?
- Have we **Encouraged Mixed –Use to Provide Choices**?
- Did we **Vary Transportation Options**?
- Did we provide **Vibrant Public Spaces & Neighborhood Identity**?
- Did we **Protect Environment and Conserve Landscape** with a well designed balance of nature and development?
- Did we design on a **Human Scale** to create a pedestrian friendly Community?
- Remember...**Design Matters!**



AIA
New Jersey

Who Can Be An Architect?



YOU CAN!

**REMEMBER:
BE IT A HOUSE, SCHOOL OR OFFICE,
WHERE EVER YOU LIVE, WORK OR PLAY,
EVERY BUILDING HAS AN ARCHITECT!**



AIA
New Jersey



**Proudly presented by
John Lyon, AIA New Jersey**

**Thank you for inviting me
into your classroom!**

**Please visit our website
for additional information
on architects and
architecture.**

<http://www.aia-nj.org>