

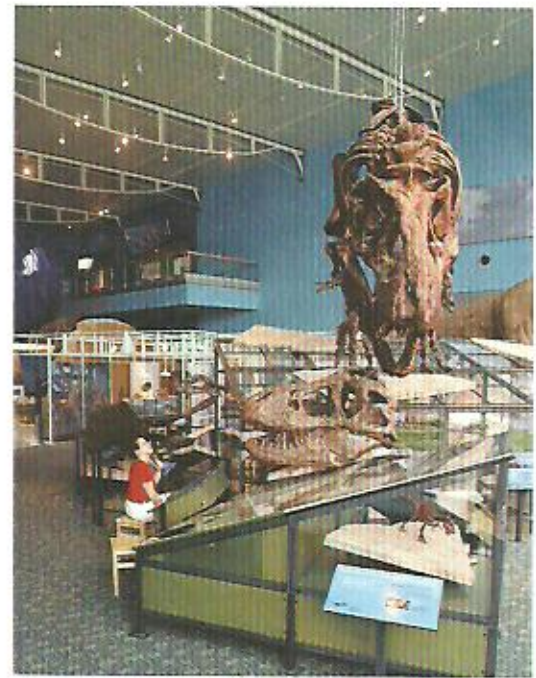


**AIA**  
Baltimore

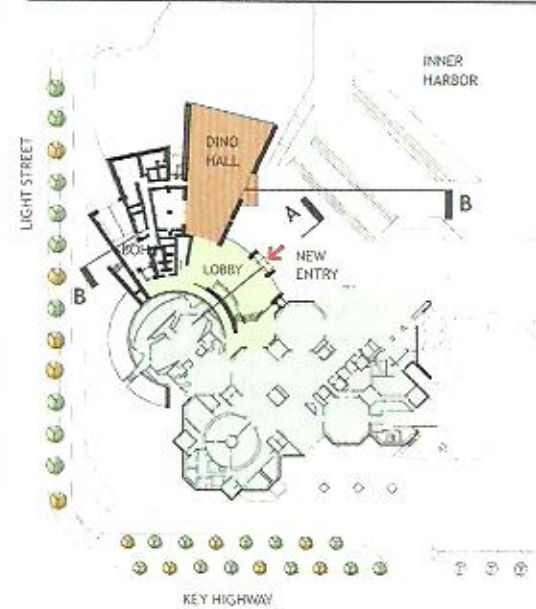
**Methodology for Creating a Middle  
School Architecture Lesson Plan**

**The Making of the Maryland  
Science Center**

Developed by Hanna Bacon and Melissa  
Rodriguez, Design Collective, Inc.

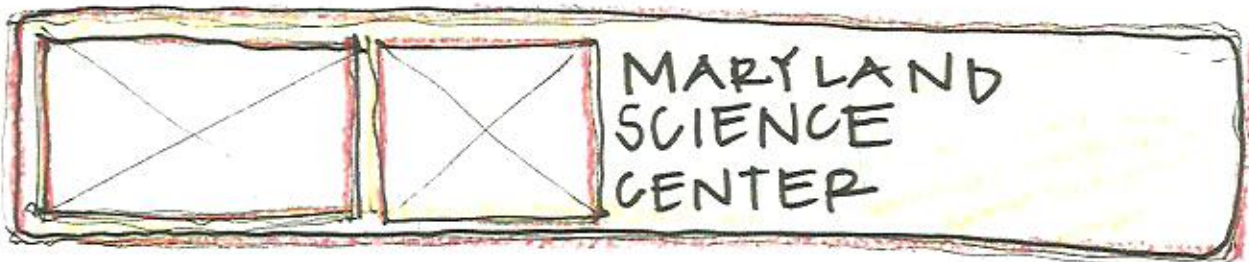
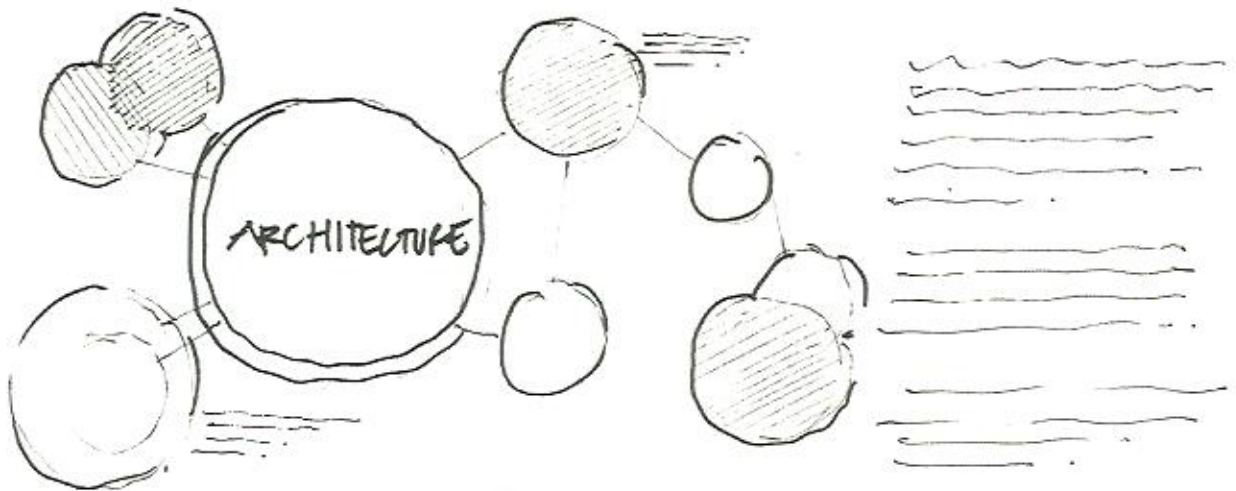


GROUND FLOOR PLAN SHOWING ADDITION



# LARGE TITLE HERE

SMALLER SUB-TITLE BELOW

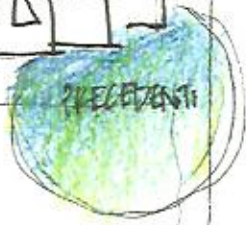


## STEP 1: RESEARCH & ANALYSIS



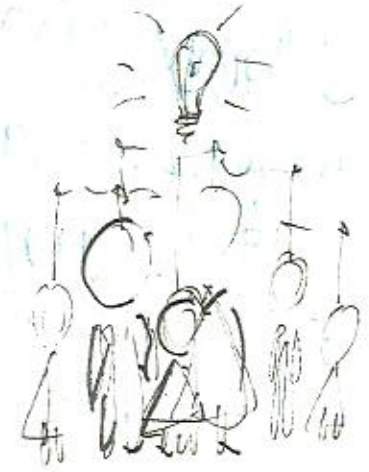
### Interactive

- Fit 3-D printed blocks onto site...
- match analysis drawings to site images...
- match vocabulary to ~~B~~ of each of the 3 above...



# STEP 2: DESIGN PROCESS

HAND DRAWING/SKETCHING		
PHYSICAL MODELING		
DIGITAL MODELING		

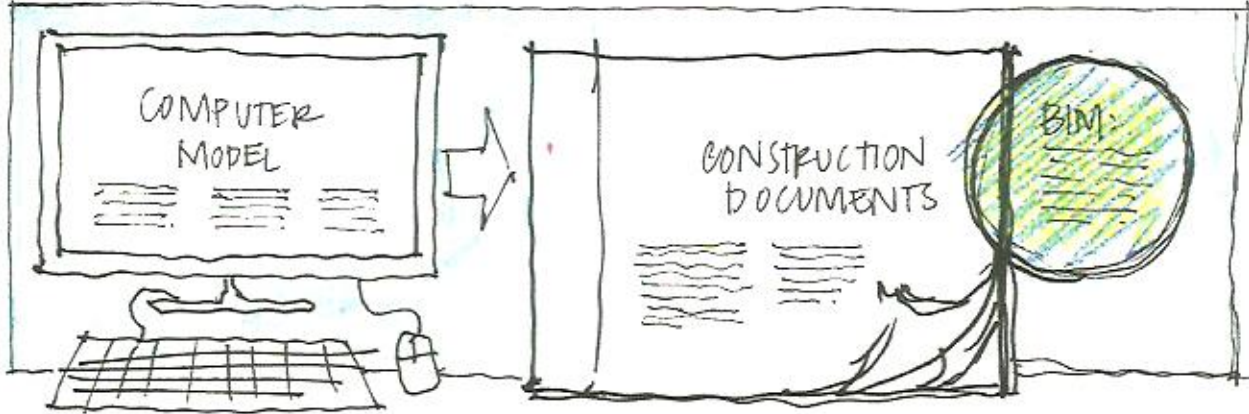


?	?
?	?

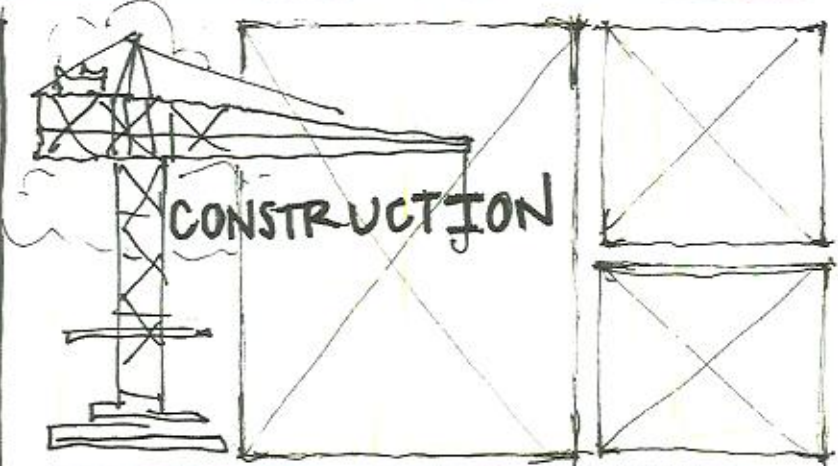
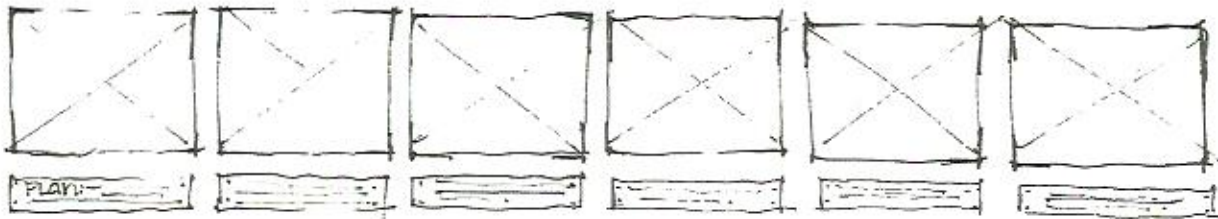
## FINAL DESIGN



# STEP 3: DOCUMENT & CONSTRUCT



MEDIUM SIZE TEXT HERE ABOUT CONSTRUCTION DOCUMENTS & DRAWING TYPES & INTERACTIVE FEAT. BELOW...



COMPLETED DESIGN

