

LeagueLine

3Q 2019



A red circular logo centered on the t-shirt. The text 'I AM' is in black, and 'EPIC' is in white. The 'I' in 'EPIC' is stylized with vertical lines. Below the text is the AIA logo (a square with a stylized 'A') and the text 'AIA New Jersey Emerging Professionals Community'.

PRESIDENT'S COLUMN



Hello fellow League members, and welcome to the third quarter. Its hard to believe that half the year is already behind us. We have had some wonderful

programs so far. In March, we partnered with the FLOW Green Film Festival to show SUPERHOUSE, a film on Passive House design and construction, followed by a discussion led by two members of the NJ Passive House Institute. In April, we had a presentation by Phil Abramson, of Topology, a developer, about how arts can be incorporated into real estate and new development. In May, we held our 30th annual joint tradeshow with Newark Suburban. Also, in May we held our spring Ted Kessler Walking Tour, to Hunters Point and Long Island City in Queens. Most recently, in June, our monthly meeting included the screening of six short videos about design and a roundtable discussion of them, plus the award of this year's scholarships and a Lego competition for children, strengthening our connection to the local communities.

Coming up, on July 15, we will host our 20th annual Golf Outing at Crystal Springs Resort in Hamburg, and on September 19, our monthly meeting at the new Modern-fold showroom in South Hackensack will feature a presentation by the NJ Economic Development Authority.

In early May, AIA National completed its recent round of accreditation of chapters and sections, which will be valid for the next three years. The League received our accreditation without comment or question; a testament to the strength of the programs and services that we provide to our members. Many thanks to all those who have assisted with our accreditation efforts.

This issue of the Leagueline focuses on our emerging professionals and the program, EPiC, designed to meet their needs. The AIA at all levels, including here at the League, has recently placed a greater emphasis on providing resources for our young members, to enter the profession, become licensed, and become the next generation of AIA members and leaders. We now have a lending library of ARE study materials, available to members studying for their tests. At the state level, EPiC has been hosting a large number of webinars dealing with many topics, from the ARE to finding and working with mentors. Please check both the League and AIA-NJ websites for information about upcoming events. I look forward to seeing what else we can do to support our emerging professionals.

Todd M. Hause, AIA
ALNNJ President 2019



THE ARCHITECTS LEAGUE
OF NORTHERN NEW JERSEY

TODD HAUSE, AIA
PRESIDENT

MATTHEW A. FINK, AIA
PRESIDENT-ELECT

WILLIAM J. MARTIN, AIA
FIRST VICE PRESIDENT

CHRIS DOUGHERTY, AIA
SECOND VICE PRESIDENT

ERIC LAM, AIA
SECRETARY

RYAN MORAN, AIA
TREASURER

JOSEPH E. DAVID, AIA
PAST PRESIDENT

TRUSTEES 2019

CHRISTOPHER BRAND, AIA
PAUL S. BRYAN, AIA
STEVEN B. LAZARUS, AIA
FAY W. LOGAN, AIA

TRUSTEES 2020

ANNA CHANG, ASSOC., AIA
RUCHI DHAR, AIA
CHRISTOPHER A. HENRICKSON, AIA
BRYAN PENNINGTON, AIA

TRUSTEES 2021

ALBERTO ABREUS, AIA
DANIEL S. CHUNG, AIA
CHERYL FOTHERGILL, ASSOC. AIA
FABIAN KARCIC, AIA

Tour of India Architecture, History and Culture

For anyone interested in seeing India, a group of League members is planning a tour that will take place in March 2020. The tour will focus on Mumbai and the Rajasthan region, including New Delhi, Jaipur and Agra. There will be an optional excursion to Chandigarh at the end of the tour. Please contact Joyce Raspa: joyceraspa@gmail.com or Todd Hause: toddmhouse@gmail.com for the itinerary and additional information.



Leagueline

Leagueline is also available online:
www.alnnj.org

NEWSLETTER COMMITTEE

ANTHONY IOVINO, AIA
DIRECTOR / EDITOR
aiovino@aiarchs.com

FAY WILLIAM LOGAN, AIA
DIRECTOR / EDITOR / ADVERTISING COORDINATOR
faywlogan.aia@gmail.com

PAUL S. BRYAN, AIA
DIRECTOR / EDITOR
psbryan@warwick.net

TODD HAUSE, AIA
DIRECTOR / EDITOR
toddhause@earthlink.net

STEVEN B. LAZARUS, AIA
DIRECTOR / EDITOR
steven@axis-ag.com

ERIC LAM, AIA
DIRECTOR / EDITOR
eric.lam@redwoodsds.com

D. BRUCE ZAHOR
ZAHOR DESIGN OFFICE INC.
GRAPHIC DESIGN & PROJECT MANAGEMENT
www.zahordesign.com



Leagueline 3Q 2019
Steve Lazarus AIA
Editor

Are you EPiC?

Do you know someone who is EPiC (Emerging Professionals Community)? Do you know an EPiC member? I do! EPiC stands for Emerging Professionals Community. They represent architecture students, recent graduates, ARE candidates, Associate AIA members, and Architects licensed less than 10 years.

I assume everyone knows an EPiC member or could be working with an EPiC member. They are all around us. They are young, eager to learn, an asset to their firm, bring a skill set that is valuable to their firm, engaging, and they bring new ideas and value the profession of architecture.

"Who We Are: Emerging Professionals are architecture students, Associate AIA members, and architects licensed for 10 years or less".

"Our Mission: Promote the professional growth of emerging architects and support local communities through advocacy, education, and service".

"What We Do: Provide programming, events, and service opportunities for our members to have fun, while building relationships, developing leadership skills, and increasing emerging professionals' involvement in the profession".



Are you EPiC?

In this 3Q edition you will be introduced to members of our EPiC community. Each one you read about has their own idea of what EPiC means to them. Most of them participate and volunteer for the position in AIA-NJ and their local chapters. We have in EPiC Matthew Pultorak Emerging Professional Chair, Megan Pritts Associate Regional Director (RAD), Vin Minkler Young Architects Regional Director (YARD), and Abigail Benjamin AIA-NJ Advisor/NCARB Liaison. These young people volunteer their time for helping fellow EPiC members. They are there for their fellow members and encourage all to come out, participate, enjoy, and learn. Events are held such as ARE webinars for persons studying for licensure, social events, and Sail NYC.

As the editor for the 3Q edition I am honored to be able to introduce you to these special people who are our future. You should come out and meet some of them and I hope you all appreciate the ones that you know. Contact any of the following if you want to join EPiC or have questions.

Matthew Pultorak, AIA, EPIC Chair matthewpult@gmail.com
Megan Pritts, Associate AIA RAD meganpritts@gmail.com
Vin Minkler, AIA, YARD avminkler@hotmail.com
Abigail Benjamin, AIA, a.bricker2@gmail.com
AIA-NJ Licensing Advisor/ NCARB



Why EPiC?

- You will get to know some more people (Which is always good)
- You will find the place to exchange professional experiences and how to solve problems.
- You can get some great advice for your future plan, such as licensure, also how to deal with some other challenges (there might be people like you, too)
- You can let people who are already in EPiC know what kind of support that other Emerging Professionals will need, and EPiC can find out a way to provide information and help.

Anna Chang
anna.hikaru@gmail.com
909-996-2236



“Who is EPiC? We are the Emerging Professionals Community and we are made up of students, graduates, and the recently licensed. We give a voice to all of those who are just beginning their careers in the field of architecture and the AIA. By doing this, we strive to increase their involvement and commitment to the AIA and its future.

As the Young Architect Regional Director (YARD) for AIA New Jersey, I represent all of those licensed for 10 years or less and help to connect EPiC, on a national level, to that broader community. I specifically target mentorship and business development as areas that can help build a stronger AIA New Jersey. I work towards bringing programs with those goals in mind to the Emerging Professionals within our region.”

Vin Minkler, AIA

When you choose to become a member of EPiC, you are a part of a committee that goes beyond the AIA. It signifies that you are a member of a group of professionals who are not only starting their careers but participating in the growth of the Architectural profession as a whole. Being EPiC is an honor for those who are pursuing licensure or have been licensed for less than ten years. I believe that it is an important step as it puts each member in a situation to thrive both unilaterally and



in a group of colleagues who set a goal to temporarily forego the competitive mindset for a collaborative one and share the intention of growing the field of architecture as a whole. We are a think tank of professionals pursuing noteworthy design strategies, sustainability, and social awareness strategies. We are able to do so by using our varying educational, work, and life experiences to help one another. Emerging professionals are hungry to learn and thanks to the organizers of the AAIANJ EPiC

Committee, there is now a platform for highly experienced individuals and their firms to meet with the committee to share helpful lessons learned. These two unique groups can collaborate in creating new energized ideas. This may broaden the horizon of the field of Architecture as a whole. Specifically, the committee hosts webinars for those who are testing and social events for members to exchange working methods and design aesthetics. If you are unlicensed or have been licensed for under ten years please consider attending an EPiC event. If you are a seasoned professional of over ten years licensure please consider reaching out to the group. When you meet a member of EPiC; challenge them, or better yet, ask them to challenge you. We need to grow the industry together by becoming more creative in design, resilient with new technologies, knowledgeable about new products, and well rounded all together by sharing the passion we have for architecture with each other.

Ryan MJ Moran
AIA, LEED A.P. BD+C





Hi, my name is Dayuan Fu and I'm proud to be a member of the AIANJ/EPiC family.

I graduated from UCLA with an M.Arch degree in 2011, and I currently work as Associate at KGM Architectural Lighting - NYC office. Being a lighting consultant coming from architecture background, my passion is in helping architects/clients realize the intrinsic beauty of architecture through excellent lighting solutions, thus my work is closely knitted with all my architect colleagues. Being a new addition to Team EPiC, I am very glad that I have the opportunity to contribute to our AIANJ community.

In my spare time, I love the outdoors, hiking, kayaking, movies, and cooking. I am a kayaker for more than 10 years and am also the president of New York Kayak Polo club. We practice weekly on the Hudson in summer and at SPU Pool, Jersey City in winter.

I first met EPiC at one of its lectures earlier this year and have been to subsequent events thereafter. Not only was I deeply inspired by the lecture provided, I was also drawn by EPiC's bold mission and the talented and dedicated crew. When our chair Matt Pultorak invited me to join, I did not hesitate, because I wanted to be part of this great team that enables, engages, and energizes our community.

EPiC offers not only guidance on ARE/architectural licensure, but also training on career and professional skillsets such as leadership, business development, etc., which creates an ongoing friendly environment for education and self-improvement for emerging professionals.

EPiC also provides a platform for us to engage a broad spectrum of AIA and the design community through collaboration, advocacy, joint events, etc. And having AIANJ President Judith Donnelly and President Elect Steven Lazarus with us at our events and calls gave us direct access to their advice.

Outside the lecture rooms, EPiC organizes outings and social events, so the members can meet face to face to share our thoughts and energy. It is always exciting for me to meet fellow EPiC members across the state and to know everybody's diverse and unique backgrounds.

I am very honored to be part of the team and look forward to more collaboration with my teammates in future.

Dayuan Fu, Assoc. AIA, LEED AP BD+C, LC
Associate
Kaplan Gehring McCarroll Architectural Lighting

Emerging Professionals: The Older Siblings of the Workplace

As the first born of two children, I have seen firsthand the difference between my childhood upbringing and my brother's. Growing up, I was the guinea pig; my parents figured out what worked and what didn't on me. When I was old enough, I could raise my voice to call them out for treating my brother differently and offer him my own lessons learned; the world I had grown up in was much more similar to his experience than the one my parents grew up in. The same is true for emerging architectural professionals. We bridge the gap between seasoned senior managerial staff and new graduates entering the field. We're the big brothers and big sisters of architecture.

After six years in my current job, I have started to see my work life mirror my family life. When I was hired, I learned the Intern Development Program (IDP) for reporting my experience to become eligible to take the Architect Registration Exams (ARE's). I then navigated it's transition to Architectural Experience Program (AXP) and finished reporting my hours through AXP.



I spent the last year navigating the ARE's in both the 4.0 and 5.0 format and the quirks of applying for eligibility and finally licensure within New Jersey. I am unique in that I have experience in the most recent NCARB formats for reporting experience and exams, which most senior staff lack.

Within the last year a new generation of emerging professionals has been hired and is following down the same path that I started down six years ago. The only difference now is that our managers have a firm grasp on the process from experiencing it firsthand and

mentoring me through it. I have become the big sister within our office, sharing my experiences for better or worse. Like my relationship with my brother, as I watch this next wave of designers come up, I can spot the differences in our architectural upbringings, acting as the mediator between them and senior staff.

My role as the AIA New Jersey Licensing Advisor and NCARB Liaison has only magnified this parallel. I have become the go-to person not only within my office, but within the state for all questions related to AXP and reporting experience, the ARE's, seeking licensure and reciprocity within New Jersey. Architecture is always changing, as professionals grow into new roles and out of old ones. The details may change, but architects will continue to grow into bigger and better roles.

Abigail Benjamin, AIA, CNU-A, NCARB
AIA NJ Licensing Advisor
a.bricker2@gmail.com
(201)-298-3418



There are many opportunities to volunteer with AIA EPiC. Everyone eligible is welcomed. Please reach out and join, you won't look back.

Are you EPiC?

EPiC is AIA New Jersey's Emerging Professionals Community. We represent architectural students, recent graduates, ARE candidates, Associate AIA membership and Architects licensed less than 10 years. We provide programming and resources to both the state and local sections. Our goals are to advocate for emerging professionals (EP's) and to provide support. Most recently, EPiC administered an ARE 5.0 webinar quiz series. Local sections have also offered events from hatchet throwing happy hours to EP round table panel discussions. Social media has been a great tool for engaging and growing our community by providing regular updates on state and local programming and new resources.

For me, EPiC has been a great resource for my own personal and professional growth through knowledge sharing, storytelling and making connections. It is great to have a community of architectural designers with similar experience levels to my own to talk through issues and experiences and share ideas. Through EPiC

I've heard some inspiring stories. Last year, the "I AM EPiC at Taking the ARE's" social media campaign featured a 60-year-old woman from the South Jersey section who completed all her 5.0 ARE's in a month! Another featured member from the Jersey Shore section lost motivation with a few failed tests. Then, with the pending birth of his first daughter, it lit a spark to retest and finish all his exams! I found these stories to be great motivation for my own pursuit of licensure.

True inspiration comes from people I have met through the EPiC network. There are some hardworking people who have stepped up into leadership roles within EPiC and AIA NJ. This year and next we have many EP's who have or are taking

on positions within their local sections. From section presidents to state committee chairs, these young leaders have also provided great motivation for my own professional growth and involvement in leadership. Not to sound too sentimental, but the best part of growing our community has been the friendships formed and likely connections we'll have throughout our careers.

Megan Pritts
Assoc. AIA | LEED AP BD+C
AIA NJ Regional Associates Director
e meganpritts@gmail.com
www.linkedin.com/in/meganpritts



ARE LIBRARY

Did you know that the Architects League and EPiC (Emerging Professionals Community) have teamed up to bring our members access to a free study ARE library? All that members need to do is contact Cecilia Cano, Assoc AIA (our library coordinator) and then come and pick up your book in Palisades Park (our library location). **ADD CONTACT INFO HERE-ASK JOE DAVID**

- Our current library features:
- + ARE 5 Review Manual - Ballast
 - + ARE 5 Practice Problems - Ballast
 - + ARE 5 Practice Exam - Ballast + Practice Exams by Gang Chen
 - * Project Management
 - * Programming & Analysis
 - * Project Planning & Design
 - * Project Development & Documentation
 - * Construction & Evaluation + How to Pass the Architecture Registration Exam by Michael Riscica + ARE 5 in a Flash – Flashcards by PPI2PASS
 - * Practice Management
 - * Project Management
 - * Programming & Analysis
 - * Project Planning & Design
 - * Project Development & Documentation
 - * Construction & Evaluation



Represent and serve all members of society, regardless of race, nationality, color, gender, sexual orientation, physical abilities, religious practices, or even political beliefs

#WeAreAIA #AIAvalues

Equity, diversity and inclusion are central to our professional mission.

#WeAreAIA #AIAvalues

Communities thrive when people are sheltered and safe, and that justice demands equal access to healthy living environments and affordable housing

#WeAreAIA #AIAvalues

Commitment to leverage the transformative power of architecture to design a better world. This means creating more vibrant, equitable living environments that embody our nation's democratic ideals

#WeAreAIA #AIAvalues

Drive positive legislative and policy outcomes at all levels of government and to promote the value of architects.

#WeAreAIA #AIAvalues

TURNING DESIGNS INTO LASTING IMPRESSIONS SINCE 1933.

- *Direct-To-Substrate*
- *Wide Format*
- *Vehicle Graphics*
- *Digital Printing*
- *Graphic Design*
- *Tradeshow Display & Presentation*
- *Finishing, Mounting & Laminating*



74 East 30th Street, Paterson NJ, 07514
 t 973.684.5945 • f 973.684.2775

info@acereprographics.com • www.acereprographics.com

INTRODUCING THE NEW WAUSAU TILE, INC. BRANDS

TECTURA
 designs

WAUSAU MADE™

TERRAZZO TILE

PLANTERS

PAVERS

BOLLARDS

PRECAST TERRAZZO

WASTE CONTAINERS

PRECAST CONCRETE

BENCHES

SLABS/COUNTERTOPS

TABLES

CONTACT US TODAY FOR PRODUCT INFORMATION
 AND CONTINUING EDUCATION CREDIT OPPORTUNITIES!

CALL YOUR NJ REPS! 973-433-0560

MADE IN
 WAUSAU®
 Wausau Tile

Duke Grimes & Diana De Santis

dgrimes@wausautilenj.com | diana@wausautilenj.com

WAUSAUTILE.COM | TECTURADESIGNS.COM | WAUSAUMADE.COM

VERSA-LAM® LVL 2.0 now leads the industry in bending strength

for higher allowable loads and more design flexibility. Sometimes, a larger MOE value doesn't mean greater bending strength.

BOISE CASCADE VERSA-LAM® LVL 2.0 3100 IS:

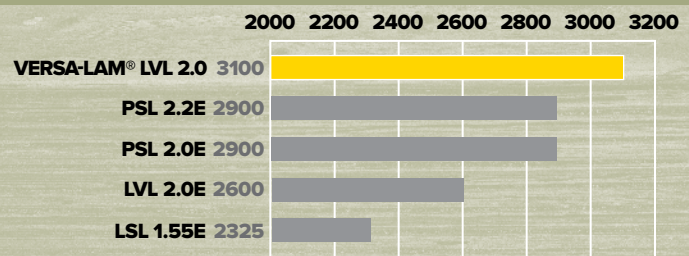
- **7% stronger** than both 2.0E & 2.2E PSL
- **33% stronger** than 1.55E LSL
- **Up to 19% stronger** than some 2.0E laminated veneer lumber beams

It's easy to think engineered wood beams with the same MOE value are direct substitutes, but that's a risky assumption. Using a weaker beam than VERSA-LAM® LVL 2.0 3100 may mean you need to add another ply – subtracting profits.



ARE THE BEAMS YOU USE AS STRONG AS VERSA-LAM® LVL? ASK WHY.

BENDING STRENGTH (F_b)



LARGEST STOCKING DEALER OF BOISE CASCADE ENGINEERED WOOD PRODUCTS IN THE REGION.
 EXCEPTIONAL DELIVERY | FIELD CONSULTATIONS AVAILABLE
 KUIKENBROTHERS.COM | (201) 652-1000

KUIKEN BROTHERS
Moulding Design Guide
 A MODERN PATTERN BOOK OF COMBINATIONS

KUIKEN BROTHERS
 COMPANY INC. *Since 1912*
 RESIDENTIAL & COMMERCIAL BUILDING MATERIALS

Visit KuikenBrothers.com/MouldingDesignGuide

DOWNLOAD CAD FILES

ULTRA SPEC
SCUFF-X

The Perfect Solution for
 High-Traffic Commercial Spaces

Benjamin Moore
 ULTRA SPEC
SCUFF-X
 SCUFF-RESISTANT INTERIOR LATEX PAINT
 Extreme Durability for High-Traffic Areas

MATTE FINISH EGGSHELL FINISH SATIN FINISH

SCUFF-X® holds up to scuffs, stains and repeated cleaning, yielding reduced downtime, lower maintenance costs and pristine walls that continue to look freshly painted over time.

Benjamin Moore[®]
 Paint like no other.[®]

Diana Rattazzi
 Architectural and Design Representative
 Benjamin Moore & Co.

diana.rattazzi@benjaminmoore.com
 C: 914-261-8603

©2017 Benjamin Moore & Co. Benjamin Moore, Paint like no other, Scuff-X, the triangle "M" symbol, and Ultra Spec are registered trademarks licensed to Benjamin Moore & Co.



AIA Architects League
of Northern New Jersey



TED KESSLER WALKING TOUR
Long Island City and Hunters Point
Sunday MAY 5th

The Spring Ted Kessler Walking Tour was held on Sunday May 5th in Long Island City and Hunters Point. This is one of the fastest growing neighborhoods in the country and the tour went through historic districts, past the cancelled Amazon sites, through industrial areas, well known landmarks and spectacular parks. The next Ted Kessler Tour will be held this fall and follow an all new route through Park Slope in Brooklyn - check your email for information and details.

AIA Convention A'19

Text to come.



2019 ALNNJ Scholarships

The Architects League is pleased to announce recipients of our 2019 Scholarships:

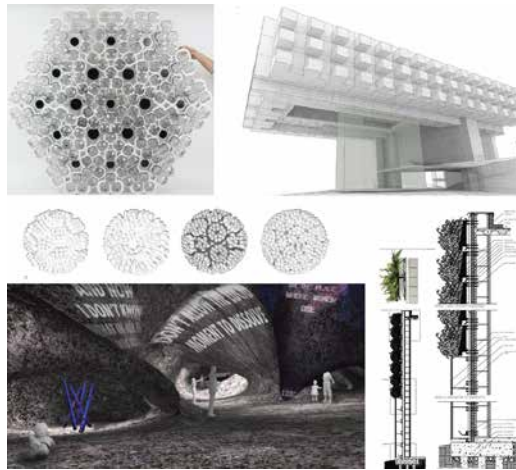
Lindsey Carpenter
Architects League Scholastic
Achievement Award
Rensselaer Polytechnic Institute

Sahony Conception
2019 Clarence Tabor Memorial
Scholarship Award
New Jersey Institute of Technology

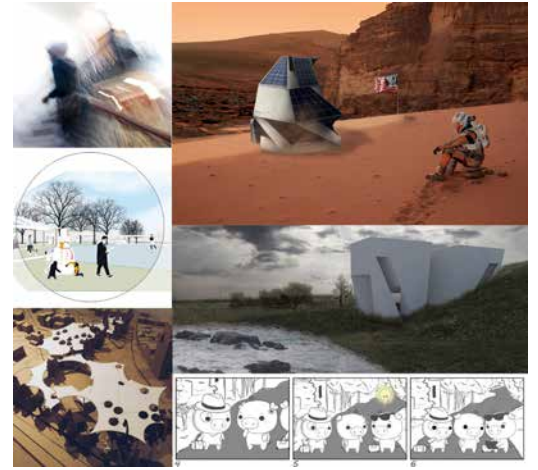
Hunter Keene
2019 Albert O. Halse Memorial Award
Penn State

Jake Gawrych
2019 ALNNJ Scholarship for
High School Students
Wayne Hills High School

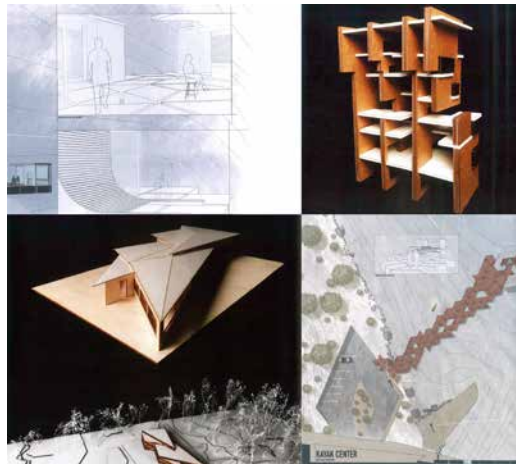
The Architects League Scholarship Awards are a joint program with the AIA Component Scholarship Grant and are made possible with assistance from our 2019 Platinum Sponsor Pella Windows & Doors and through proceeds from our annual Golf Classic, which will be celebrating it's 20th anniversary this July.



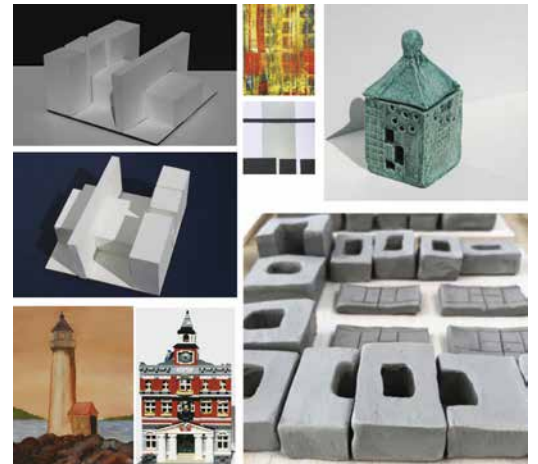
Lindsey Carpenter



Sahony Conception



Hunter Keene



Jake Gawrych

March Meeting goes with the FLOW

On March 28th, ALNNJ chose to go with the FLOW for our second year at the FLOW Green Film Festival at the Wyckoff Public Library. The League sponsored the screening SUPERHOUSE, a film about the Passive House building approach. The presentation, which was free to the public, followed a dinner for members at Aldo's Restaurant. The movie was followed by a panel discussion featuring two Passive House experts, Darren Macri and Jim Muhaw. The FLOW Green Film Series is a Joint Venture of the Franklin Lakes, Oakland, Wyckoff Environmental Commissions and Green Teams in partnership with the Wyckoff Public Library, the Oakland Public Library and the Ramapo-Indian Hills High School Green Teams. Thank you to J.R. Frank, AIA, for assistance in coordinating this event for our membership.



April Meeting Public Art in Architecture and Redevelopment

Public Art in Architecture and Redevelopment dominated the discussion at the April 18 meeting of the Architects League of Northern New Jersey, held at the Renaissance Meadowlands Hotel in Rutherford. Phil Abramson, Founder and CEO of TOPOLOGY, a multi-discipline planning and real estate consulting firm, offered a case study of how redevelopment projects in Morristown are seeking to bring value to the community by incorporating art into the streetscape. Topics discussed included quantifying and presenting a direct link between art and property values in urban neighborhoods, historical precedence that demonstrates traditional design incorporating art into architectural value, and the formation of public art programs and the management of municipalities to implement policy. Preceding the program was an informative overview of Art in Architecture by Ralph Rosenberg of NK Architects. Thank you to Ralph for coordinating the event!



30th ANNUAL ALNNJ / AIA Newark & Suburban Architects TRADE SHOW

On May 9, 2019 the 30th Trade Show co-sponsored by the Architects League of Northern New Jersey and AIA Newark & Suburban Architects was held once again at our conveniently located venue, the Marriott at Glenpointe in Teaneck, NJ. As in the past, the management and staff provided the great service and food we have come to expect.

The 15 seminars were well attended and the exhibition floor of 60+ booths was active. The number of attendees, however, was no greater than in the past few years which was disappointing as this was a very special year and the exhibitors are there to meet as many of us as possible and to present their latest products and services. We have even encouraged our members to bring a young working architect or intern in their office as their guest with dinner provided by the show! It is exhibitors' face-time with our members and guests which brings them back - 30 years now, to support the Show! This is important to ALL of our members as it is our sections' very important source of income.

We want to thank all of our exhibitors for their continuing support with a very special thanks to ILA Lighting & Controls, the sponsor of our Grand Prize of \$1000 dollars of AmEx gift cards for our lucky "booth raffle" winners, Anna Marie Petersen, Faris Selim and Ted Radovici.

Thanks as well to our attendees and plan on attending the 31st Annual Trade Show next May – Put it on your calendars now!



Summertime Events

AIA Architects League of Northern New Jersey



Visit Cape May New Jersey Known for its grand Victorian houses.

Have a day off?



Drive through the Jersey shore towns and check out all the new construction

Sunday	Monday	Tuesday	Wednesday	Thursday	Friday	Saturday
--------	--------	---------	-----------	----------	--------	----------

July 2019 1 2 3 *Take a summer drive...* 4 5 6



ALNNJ 20TH ANNUAL GOLF CLASSIC
MONDAY, JULY 15, 2019
 Crystal Springs, Hamburg, NJ

CAMP NOTES ON FASHION
 The Met
 Thru Sept. 8th



Renoir: The Body, The Senses
 Thru Sept. 22nd
 The Clark Art Museum
 clarkart.org

Visit the New Statue of Liberty Museum on Liberty Island



libertyellisfoundation.org

FREE!
Summer Places in New York City



FREE... Walk across Brooklyn Bridge



FREE... Walk through Grand Central



FREE... Staten Island Ferry Ride



FREE... NY Public Library



FREE... Visit Governors Island

7	8	9	10	11	12	13	14	15	16	17	18	19	20	21	22	23	24	25	26	27	28	29	30	31
---	---	---	----	----	----	----	----	----	----	----	----	----	----	----	----	----	----	----	----	----	----	----	----	----

August 2019 1 2 3 4 5 6 7 8 9 10 11 12 13 14 15 16 17 18 19 20 21 22 23 24 25 26 27 28 29 30 31

5	6	7	8	9	10	11	12	13	14	15	16	17	18	19	20	21	22	23	24	25	26	27	28	29	30	31
---	---	---	---	---	----	----	----	----	----	----	----	----	----	----	----	----	----	----	----	----	----	----	----	----	----	----

12	13	14	15	16	17
----	----	----	----	----	----

19	20	21	22	23	24
----	----	----	----	----	----

26	27	28	29	30	31
----	----	----	----	----	----

2	3	4	5	6	7	8	9	10	11	12	13	14	15	16	17	18	19	20	21	22	23	24	25	26	27	28	29	30	31
---	---	---	---	---	---	---	---	----	----	----	----	----	----	----	----	----	----	----	----	----	----	----	----	----	----	----	----	----	----

9	10	11	12	13	14	15	16	17	18	19	20	21	22	23	24	25	26	27	28	29	30	31
---	----	----	----	----	----	----	----	----	----	----	----	----	----	----	----	----	----	----	----	----	----	----

16	17	18	19	20	21
----	----	----	----	----	----

23	24	25	26	27	28	29	30	31
----	----	----	----	----	----	----	----	----

30	31
----	----



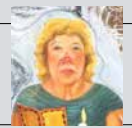
Whitney Biennial
 Thru Sept 22nd
 The Whitney
 whitney.org



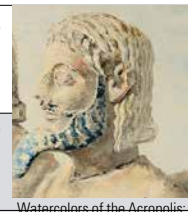
Spilling Over: Painting Color in the 1960's
 Thru Aug 30th
 The Whitney Museum of Art



Leonard Cohen: A Crack in Everything
 Thru Sept. 8th
 jewishmuseum.org



Scenes from the Collection
 ongoing
 The Jewish Museum
 jewishmuseum.org



Watercolors of the Acropolis:
 Emile Gillieron
 The Metropolitan Museum of Art
 Thru Jan 3, 2020



PASSAIC COUNTY ARTS CENTER
 AT THE JOHN W. REA HOUSE



APOLLO'S MUSE
 The moon in the age of Photography
 thru Sept 22nd.
 The Metropolitan Museum of Art
 metmuseum.org

Congratulations !

SNS Architects & Engineers, PC has been providing Architectural and Engineering services to public and private sectors for over 60 years.



New Members

ALNNJ is pleased to welcome the following New Members and Component Transfers:

- Douglas Battersby, AIA
- Ryan Calabro, Assoc. AIA
- Brett Carlton, AIA
- William Caulin, AIA
- Katherine Foreman, AIA
- Michelle Kleva, Assoc. AIA
- Jonathan Kuybida, AIA
- Jennifer Masotti, Assoc. AIA
- Michael Peterman, AIA
- Michael Pikowski, Assoc. AIA
- Vipin Raj, Assoc. AIA
- Igor Risteski, Assoc. AIA
- Ariel Rodriguez, Assoc. AIA
- Irina Schneid, AIA
- Mariam Shahjahan-Cantelmi, AIA

- Hector Vaca, Assoc. AIA
- Lesvia Vega, Assoc. AIA
- Edmund Yu, AIA

ALNNJ also welcomes the following New Allied Members:
 Allen Loya, PPG Paints
 Leo Malkin, Designer/BIM Specialist

The Architects League looks forward to your involvement and participation. Please introduce yourself at the next meeting or event.



Welcome New Members



Architects League member **Tonu Vanderer, AIA Emeritus** of Montclair, New Jersey passed away on March 9, 2019 at the age of 85.

Leagueline

The Architects League
of Northern New Jersey
P.O. Box 152
Paramus, NJ 07653-0152



PROSURANCE
REDEKER
GROUP LTD.

Prosurance Redeker Group

Creating Insurance Solutions
for Architects, Engineers &
Land Surveyors

ae-insurance.com

Contact us for innovative,
low cost solutions to the
challenge of securing and
maintaining coverage.
We have the experience,
relationships and
commitment to help!

Our specialists
are available to
speak with you.
212. 693. 1550
Call today!

420 Lexington Avenue
Suite 2700
New York, NY 10170
(212) 693-1550



PELLA ARCHITECT SERIES
CONTEMPORARY WINDOWS
AND PATIO DOORS

EXPAND YOUR POINT OF VIEW



866.437.3552

PRO.PELLA.COM

Pella Windows & Doors | West Caldwell, NJ



ALNNJ 20TH ANNUAL
GOLF CLASSIC
MONDAY, JULY 15, 2019
Crystal Springs, Hamburg, NJ

Bringing Structural Innovation & Excellence to your Building Projects



- ◆ Structural Analysis & Design
- ◆ Condition Assessment Reports
- ◆ Historical Preservation
- ◆ Renovations & Additions
- ◆ Peer Review
- ◆ Value Engineering
- ◆ MEP Services
- ◆ Feasibility Studies
- ◆ Restoration of Existing Structures

7 Park Avenue, Montclair, NJ 07042
www.ksi-pe.com • P: 973.577.7739